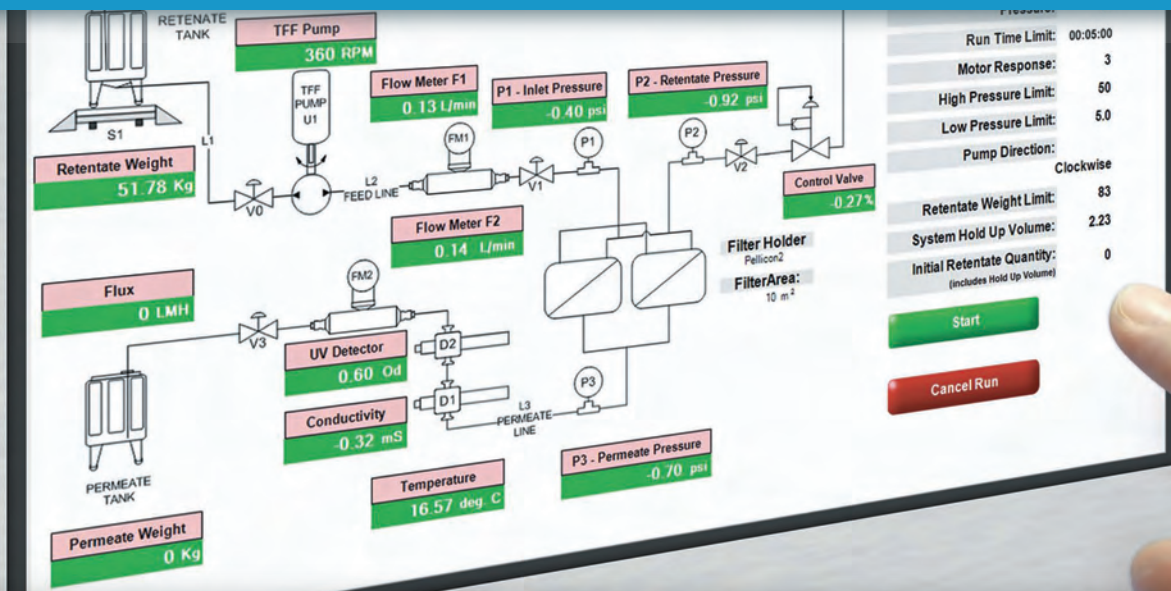


TFF Protein Purification at your fingertips.



intelligent bioprocessing systems

SciPure™ 300 GMP: Automate, Optimize and Document TFF production



Accelerate to market and reduce your purification costs with SciLog's SciPure™ 300 GMP, a revolutionary purification platform for GMP Manufacturing. Its user-friendly interface and menu-driven operation with continuous data acquisition (21 CFR Part 11) make it the ideal system for TFF applications, including **ultrafiltration, microfiltration, concentration and diafiltration**. *Call SciLog today with your requirements...SciLog listens.*

- Quick delivery, easy installation and use
- Maintains optimal TFF conditions with automated TFF control
- User-friendly with full-color graphical display, touch-screen and menu-driven operation
- Reduces purification costs by optimizing, controlling and documenting your processes
- Innovative, patented automation of TFF applications
- Lowest hold-up volume
- Automated protein purification
- Can be used with any manufacturers' TFF filters or hollow fibers
- User-definable recipes and parameters
- Scan Pressures
- Scan Pump Rates
- Ethernet, OPC
- Password protected

 **SciLog**[®]
BioProcessing Systems
www.scilog.com

Patents #5,947,689; #6,350,382; #6,607,669; #6,712,963 and others pending.

Visit us at:
IBC Single Use BioProcess Show

SciLog, Inc. 8845 South Greenview Drive, Suite 4, Middleton, WI 53562 Ph: (800) 955-1993

TFF Production Platform	SciPure 200		SciPure 300	SciPure 400
System Size/Parameters	A	B		
Recirculation Pump Rate, max	15 LPM	23 LPM	60LPM	120 LPM
Recirculation Pump Rate, min	0.75 LPM	1.2 LPM	3 LPM	6LPM
Pump Pressure, max	60psi		60psi	60psi
Feed Connections	1/2"TC	3/4"TC	1.0"TC	1.5"TC
Retentate Connection	1/2" TC	3/4"TC	1.0"TC	1.5" TC
Permeate Connection	1/2" TC	3/4"TC	3/4"TC	1.0" TC
System Hold-up Volume:	0.7 to 2.0L ¹		2.0 to 6.0L ¹	6.0 to 8.0L ¹
System Footprint:	30"(W) x 36"(L)		36" (W) x 60" (L)	36" (W) x 60" (L)
	<i>A = W-M Peristaltic</i>			
	<i>B = Viking, Rot. Lobe</i>			
Utility Requirements:	85 psi Air			
Power Requirements:	3-Phase 230VAC, 60 Hz, 30A			
Materials of Construction:	Wetted Surfaces: 316L Stainless Steel, EDPM			
TFF Platform	304 Stainless Steel			

1. Depends on configuration

Cassette Membrane Options

GE Healthcare: Kvick Lab/Flow	Kvick Lab	Kvick Flow	Kvick Flow
# Cassette Holders	1	1	2
Min/Max Cassettes	1/5	1/10	2/20
Min/Max Area (m ²)	0.11/0.55	0.46/46	0.92/9.2

Millipore: Pellicon	Pellicon 2	Pellicon 2	
# Cassette Holders	1	1 or 2	
Min/Max Cassettes	1/5 Cassette	1/4 Maxi	N/A
Min/Max Area (m ²)	0.5/2.5	2.5/10	

Pall:	Centramate/Maximate	Centrasette 5	Centrastak 100AT
# Cassette Holders	1	1 or 2	1
Min/Max Cassettes	1/5	1/10	2/40
Min/Max Area (m ²)	0.1/0.5 0.2/1.0	0.5/10	1/20

Sartorius:	Sartocon Slice	Sartoflow 2	Sartoflow 20
# Cassette Holders	1	1	1
Min/Max Cassettes	1/5	1/10	1/20
Min/Max Area (m ²)	0.1/0.5	0.7/7	0.7/14

Sartocon Slice and Sartoflow are trademarks of Sartorius-Stedim.

Centramate, Maximate, Centrasette and Centrastak are trademarks of Pall Corp.

Kvick is a trademark of GE Healthcare.